

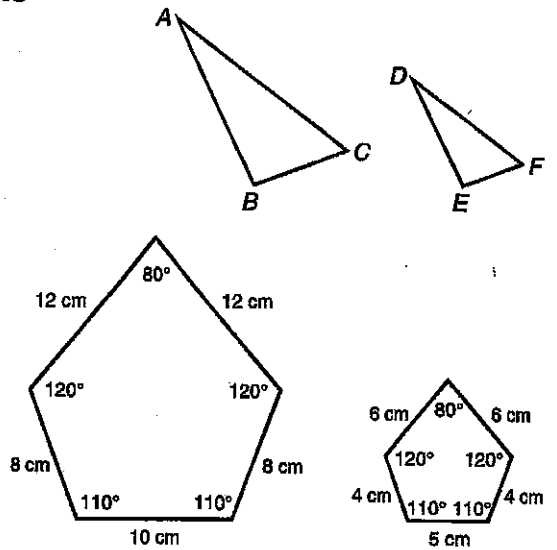
**SECTION 5B**

**Ready to Go On? Quiz**

**5-7 Similar Figures and Proportions**

Use the similar triangles to the to name the following.

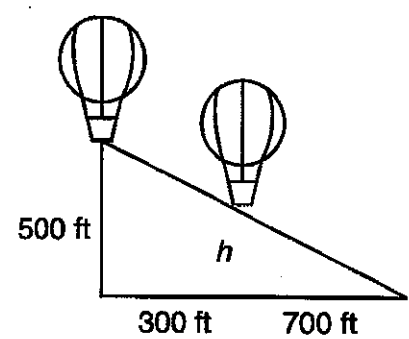
1. corresponding side to  $\overline{AC}$   $\overline{DF}$
2. corresponding side to  $\overline{EF}$   $\overline{BC}$
3. corresponding angle to  $\angle ACB$   $\angle DFE$
4. corresponding angle to  $\angle EDF$   $\angle BAC$
5. Are the pentagons similar? yes



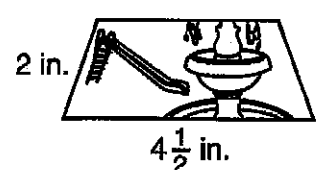
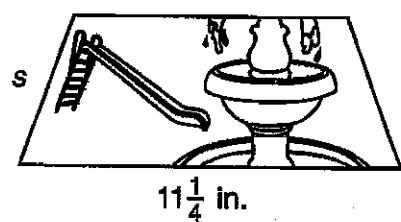
**5-8 Using Similar Figures** Show work.

6. Araxi has a photo of her cat that is 6 inches by 4 inches. She ordered a copy reduced to a width of 2 inches for her wallet. What is the length of the reduced copy? 3 in

7. Two hot-air balloons are heading for their landing target, as shown below. How high is the balloon closest to the target? 350 ft



8. A company sells two trapezoid-shaped jigsaw puzzles with the same picture and the same shape, as shown below. What is the length,  $s$ , of the side in the larger version of the puzzle?



5 in

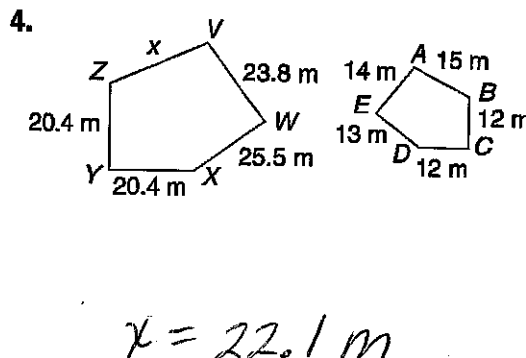
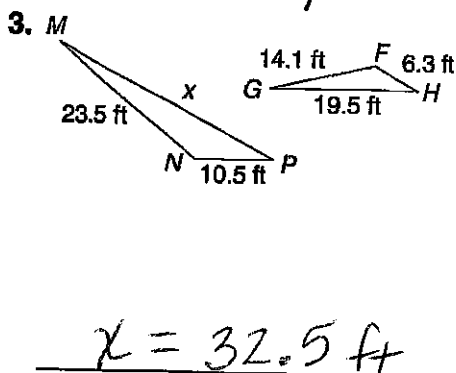
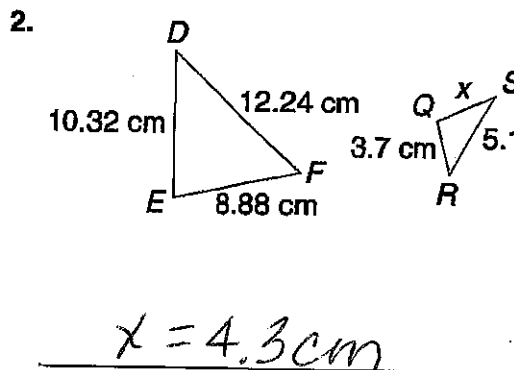
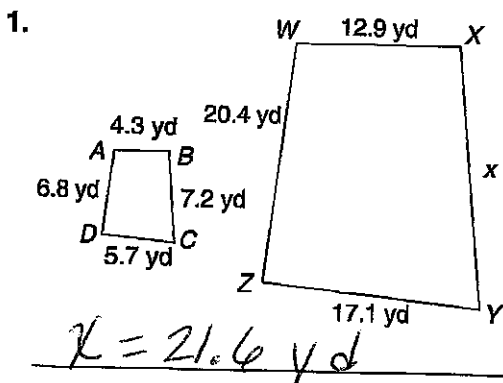
**SECTION**  
**5B**
**Ready to Go On? Quiz** continued

**5-9 Scale Drawings and Scale Models** *Show work.*

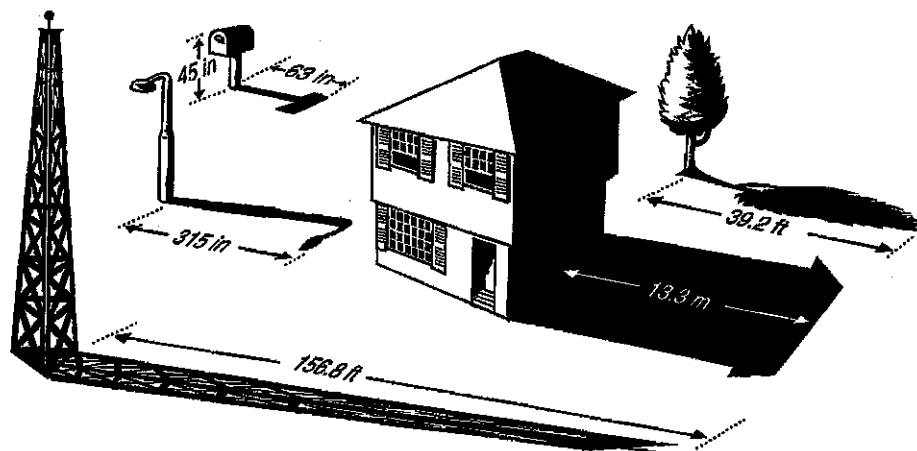
9. The wingspan of an airplane is 108 feet. On a scale model of the airplane, the wingspan is 3 feet. What is the scale factor?  $\frac{1}{36}$
10. In Angel Stadium, located in Anaheim, California, the distance from home plate to the left field wall is 330 ft. What will that distance be in a diagram of the field with a scale factor of  $\frac{1}{200}$ ?  
1.65 ft or about 1 ft 8 in
11. On a map, the distance from one city to another measures about 5.3 cm. What is the approximate distance between those two cities if the map scale is 1 cm = 50 km. 265 Km
12. The blueprint of the Nguyen house is done with a scale factor of  $\frac{1}{16}$ . If the length of a bedroom measures 8.5 in. on the diagram, what is the approximate length of the actual bedroom?  
about 11.3 ft or 11 ft. 4 in
13. What is the exact scale factor of the model of a bridge, if the distance from end to end of the model is 5 in. and that same distance on the actual bridge is 120 ft?  $\frac{1}{288}$
14. A scale model of Tyrannosaurus Rex has a scale factor of  $\frac{1}{36}$  and a height of 6 inches. How tall would it the actual dinosaur be? 18 ft. or 216 in
15. The distance between Dallas, Texas, and Denver, Colorado, measures 10 cm on a map. The actual distance is 663 miles. What would be the approximate map measurement for the distance between Dallas and El Paso, Texas, which lie 572 miles apart? 8.6 cm

**LESSON** **Practice C**  
**5-8 Using Similar Figures**

Find the unknown length in each pair of similar figures.



Estimate the height of each object in the picture below.



5. house 9.5 m

6. tree 28 ft

7. lamppost 225 in

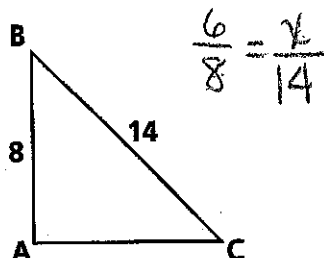
8. radio tower 112 ft

Name: \_\_\_\_\_

## SIMILAR TRIANGLES

10.5

1. Triangle ABC is similar to Triangle DEF. Use a proportion to determine the value of  $x$ .



$$\frac{6}{8} = \frac{x}{14}$$

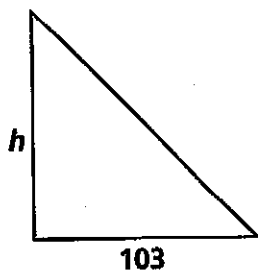
$$\frac{6}{x} = \frac{8}{14}$$

$$8x = 84$$

$$x = 10.5$$

65.7

2. The two triangles are similar. Use a proportion to determine the value of  $h$ . Round your answer to the nearest tenth.



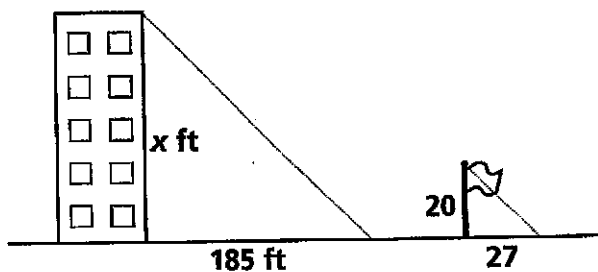
$$\frac{h}{103} = \frac{32}{34.5}$$

$$34.5h = 2,266$$

$$h = 65.7$$

137 ft

3. If a flagpole is 20 ft tall and casts a shadow of 27 ft, how tall is a building that casts a shadow of 185 ft? Write a proportion and solve. Round your answer to the nearest foot.



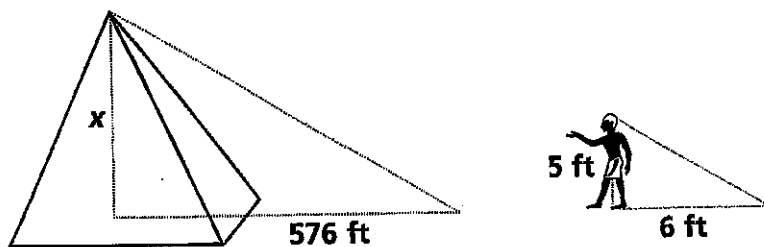
$$\frac{20}{x} = \frac{27}{185}$$

$$27x = 3,700$$

$$x = 137$$

480 ft

4. If an Egyptian man is 5 feet tall and casts a shadow of 6 ft, how tall is a pyramid that casts a shadow of 576 ft? Write a proportion and solve.



$$\frac{5}{6} = \frac{x}{576}$$

$$6x = 2,880$$